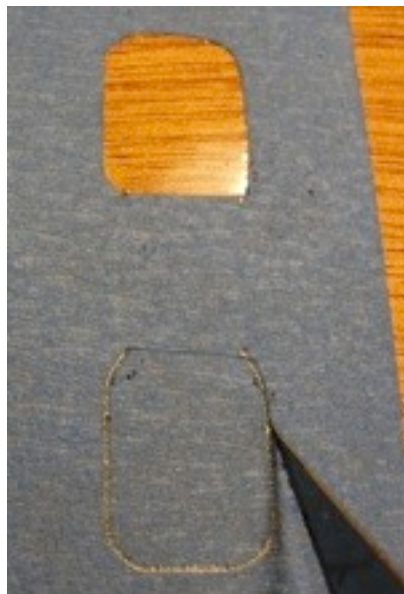
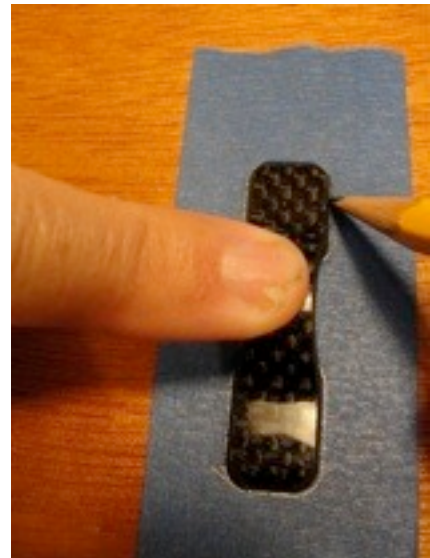


# Carbon Eye strap Gluing Instructions

**Apply** a piece of wide masking tape where you want to attach an eye strap.

**Place** the eye strap over the tape and align carefully, parallel to the centerline or deck chine.

**Trace** around it with a sharp pencil. →

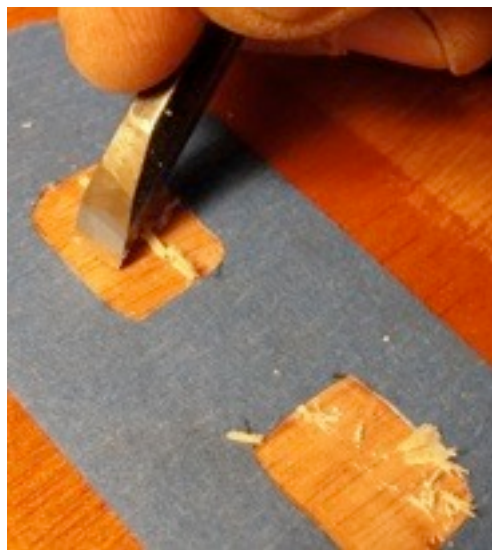


**Cut** on the pencil line with a sharp Exacto knife or single edge razor blade.

**Use** light pressure on the blade and try to follow the center of the pencil line. ←



**Remove** the tape with the tip of the knife. →



**Eye straps** must bond to clean epoxy to be strong.

**If** your boat was varnished, use a very sharp 1/4" chisel as a scraper to remove the varnish. ←

**Bare** epoxy can be prepared for bonding with a piece of 3-M abrasive pad or fine sandpaper.

**Work** parallel to, or away from the edges of the tape. →



**Prepare** the underside of the eye strap with sandpaper as shown.



Eye straps can be glued on with the same epoxy you built your boat with (add a small amount of thickener) or better yet, use a toughened epoxy, such as G-flex.

**Remove** the fine dust from gluing surfaces by rubbing with a clean rag.

**Apply** a small amount of epoxy to both surfaces with a gloved fingertip.



**Hold** the eye strap down gently with one finger while scraping the excess glue from the edges of the eye strap with a sharpened stick.



**Leave** the tape in place until the epoxy cures.



Glued and finished eye straps.